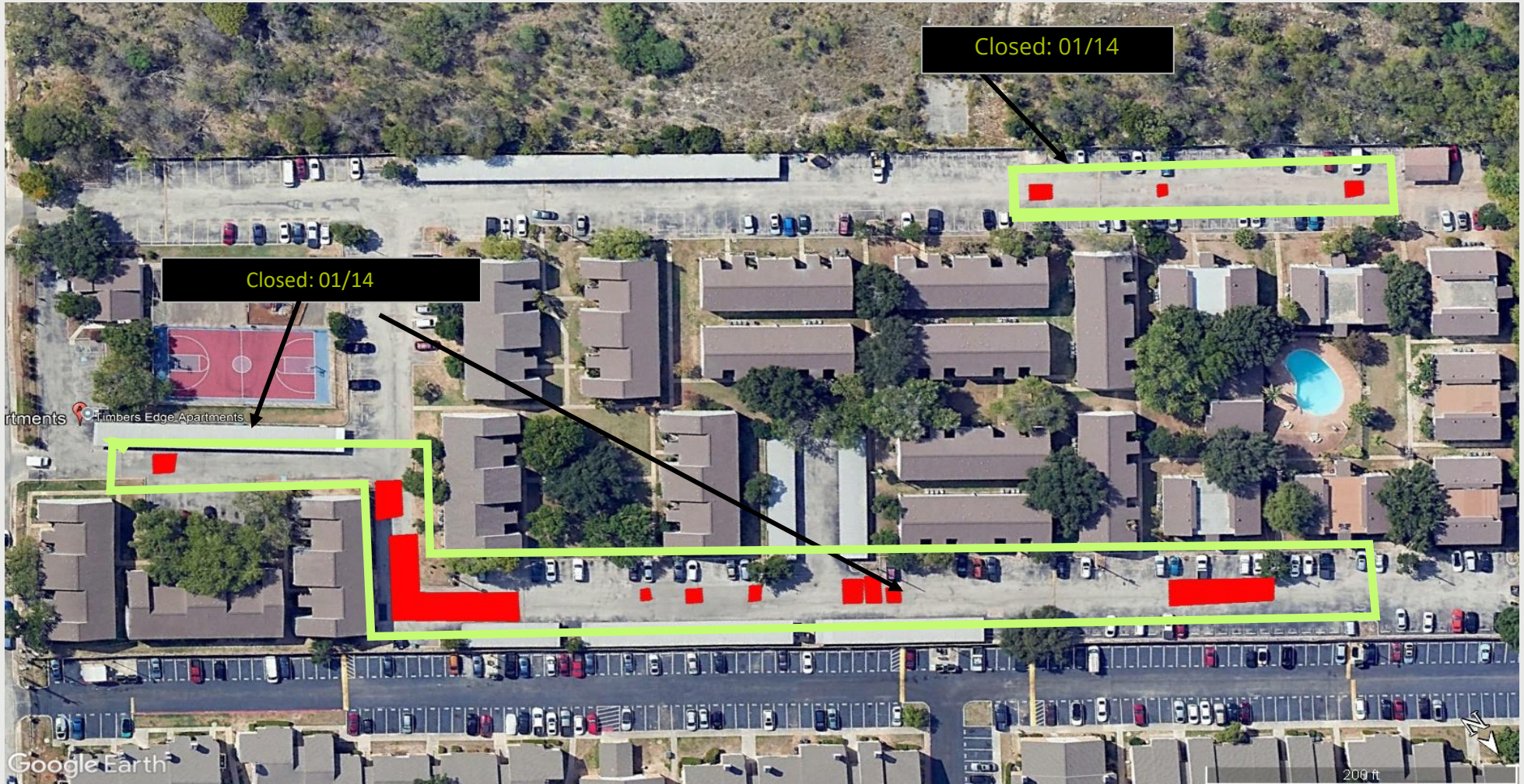


PAVEMENT REPAIR PLAN

Timbers Edge Pothole Repairs
6903 Border Brook, San Antonio, TX




****Dates May be updated due to weather changes, check pavemap.com each day for updated phasing****

Dates of Closure

Yellow Area Closed: 01/14

Thank you all for your help these past few days of work. We have completed our initial phase of work preparing the areas to have asphalt installed. Due to the cold weather that paving date has change, please refer to Dates of Closure for updated dates. *allow 4-6 hours after placement before driving on*

LEGEND

Pothole Repairs 

Questions? Contact Project Manager Kyle Belka at (435) 512-6287